

Cincinnati Children's & Avondale

Stronger, Together



**Working to Build a
Mutually Successful
Future**



Cincinnati Children's and Children in Avondale

- **Long-term and ongoing commitment**
 - 80% of Avondale's children receive their care at Cincinnati Children's
 - More than 20 programs/initiatives in Avondale
 - Infant Mortality and Premature Birth
 - Education and Third Grade Reading
 - Primary Care and Care Coordination
 - Housing Collaborations
 - Diversity and Inclusion



Cincinnati Children's & Avondale

PARTNERSHIPS



Partnerships – Key to Success in Avondale

Among the project's guiding principles is the commitment to respecting, engaging, and enhancing the neighborhood, Community, and City

- A Community Open House was held on 11/9, and we will continue quarterly information sessions
- A Community Advisory Group is advising how we:
 - Partner with the community to foster awareness, project goals and timelines
 - Effectively communicate with Avondale residents and community members
 - Best integrate and interface with the community (e.g., site design, landscaping, green space, etc.).



Partnerships – Key to Success in Avondale



Infant Mortality and Premature Birth

- Every Child Succeeds
- Cradle Cincinnati

Education and Third Grade Reading

- Rockdale School Literacy Programs
- South Avondale School Programs
- Early Childcare Center Partnerships

Primary Care and Care Coordination

- All Children Thrive (ACT) Network
- School Base Health Centers
- First Ladies Initiative
- Gabriel's Place Jr. Chef Program
- Hirsch Recreation Center Health Programs
- The Community Builders Health Initiatives

Housing Collaborations

- Avondale Home Improvement Program
- Hickory Townhomes

Diversity and Inclusion

- Collaboration with Workforce Programs, Messer
- Biomedical Research Internship for Minority Students
- Job Shadow Program

Partnership and Collaboration

Changing the Outcome Together



The Community Builders



**The Urban League of
Greater Cincinnati**



**Early Literacy & Reading
in Schools**



**Gabriel's Place Jr Chef
Academy**



**First Ladies Initiative in
Avondale Churches**



**ACDC, ACC and
Avondale Youth Council**

Connecting Families to Resources

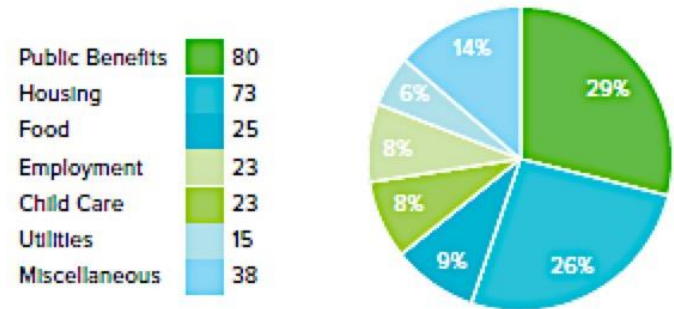
Pediatric Primary Care Community Resource Liaison

- Connects families to needed resources including
 - Food and Benefits
 - Healthy Housing & Legal Aid
 - Employment support
 - Internet/Phone Access

- No appointment necessary for services



Social Needs Addressed by Community Resource Liaison



Source: Pediatric Primary Care Center

300

Nearly 300 families helped in the program's first year

Cincinnati Children's & Avondale

WORKFORCE DEVELOPMENT



Enhancing Avondale....Together

Workforce Development

- Messer/Cincinnati Children's Collaboration
 - Leadership and Skill Development
 - Employment and Training Programs/Partnerships
 - Career Development Programs
-
- *Focus on Avondale and Uptown Residents*
 - *Coordination with Avondale Community Partners*
 - *Track Jobs for Avondale and Uptown Residents*



Economic Inclusion and Workforce Diversity Goals

- Diverse Spending (MBE & WBE)
 - Construction and Professional Fees to meet or exceed 30% of eligible project costs
- Workforce Diversity
 - Hours worked by women, minorities, and/or minority women on Design and Construction Team to meet or exceed 25%
 - Maximize workforce diversity for skilled trades, as well as design, engineering, and management professionals
 - Engage as many professionals and skilled trades persons from Avondale and Uptown as possible
- Past Project Successes and Ongoing Commitment

| Project | Diverse Spending* | Workforce Diversity** |
|----------------------------------|-------------------|-----------------------|
| “T” Building | \$47M (23.8%) | 20% |
| Liberty Township – Bed Expansion | \$22M (36.7%) | 20% |
| Liberty Expansion - Proton | \$36M (25.4%) | 19% |

*spend on construction & design with diverse (MBE/ WBE) companies

**Diversity inclusive of MBE, WBE

Cincinnati Children's & Avondale

**HEALTHIEST
CHILDREN**



Enhancing Avondale....Together

Healthiest Children in the Country

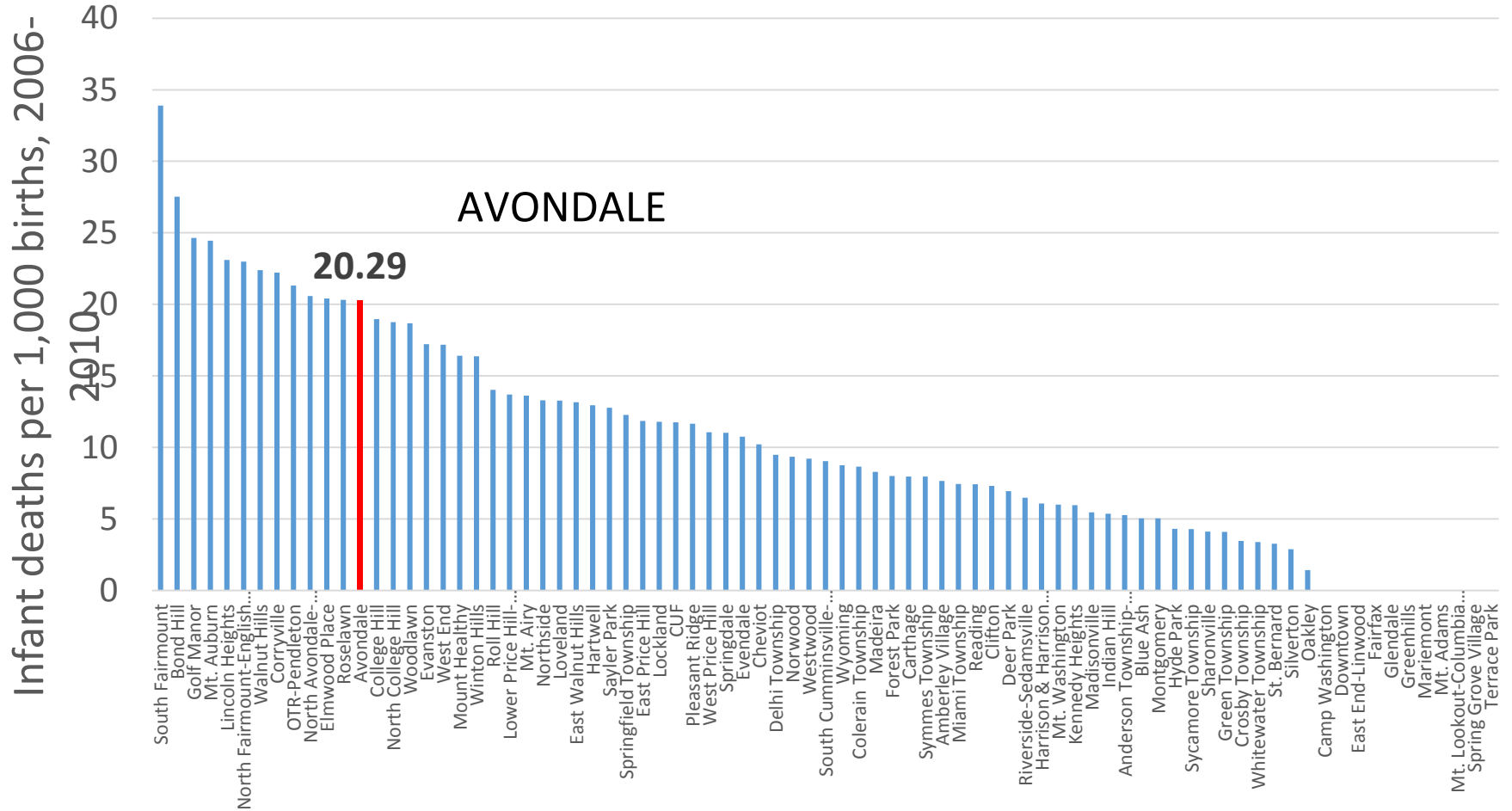
- Continue and strengthen present work and partnerships with the community
- Focus on improving:
 - 3rd Grade Reading
 - Infant Mortality
 - Primary Care
- Collaborating on 17 Avondale Partnership Grants
 - Grants funded to address critical child and community health issues in Avondale



*Partnership and collaboration are key
to community transformation*

Enhancing Avondale....Together

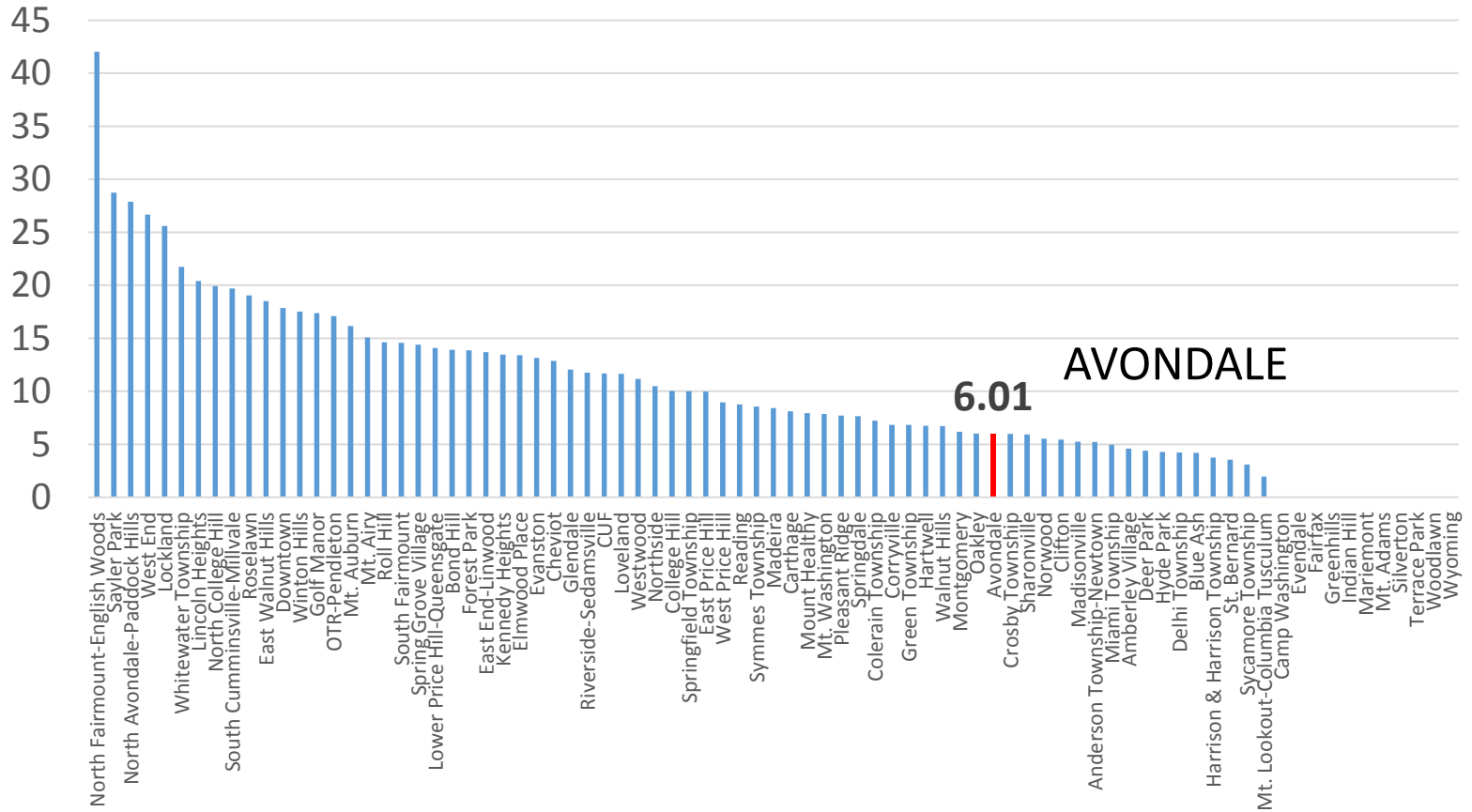
Infant mortality rate: 2006-2010



Enhancing Avondale.... Together

Infant mortality rate: 2011-2015

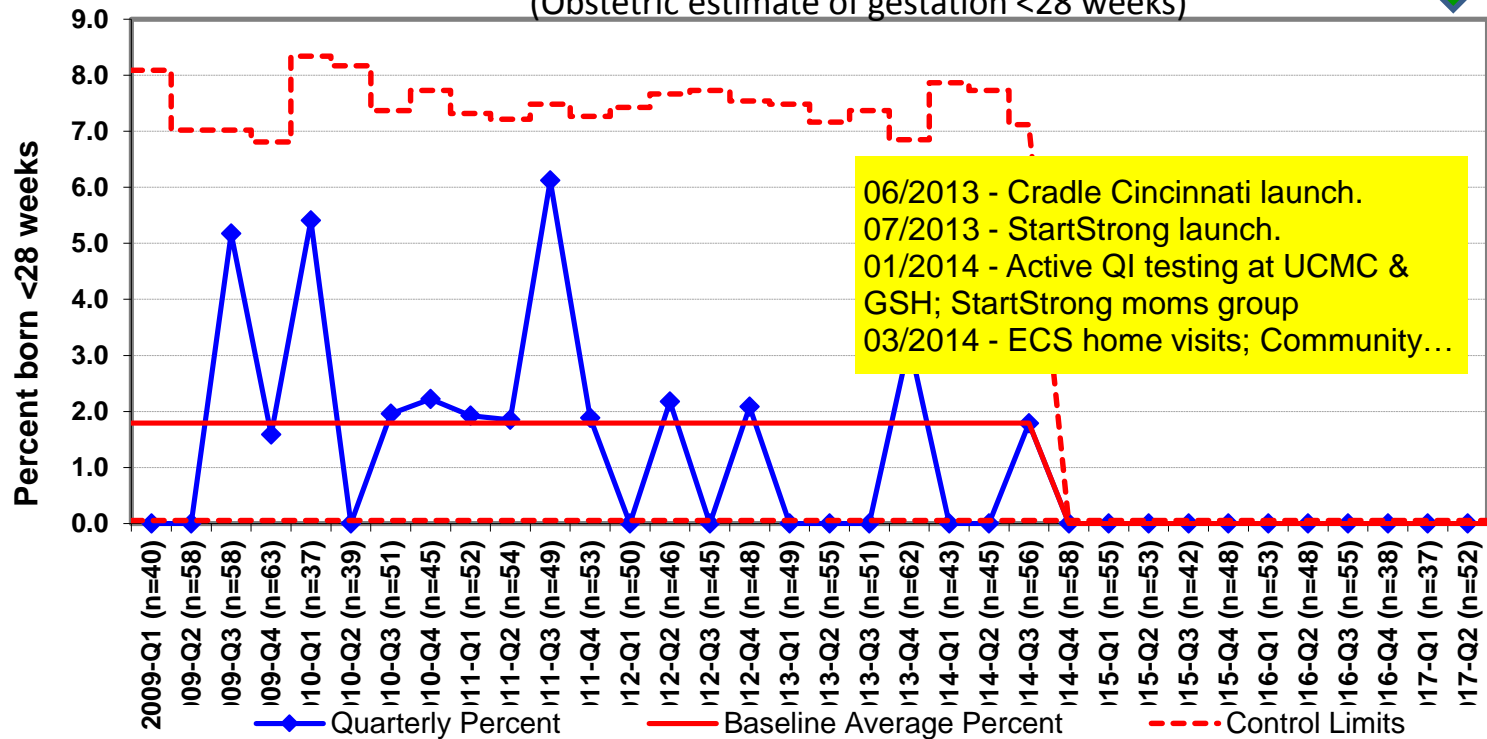
Infant deaths per 1,000 births:
2011-2015



Enhancing Avondale... Together



Resident singleton extreme preterm births
in ZIP Code 45229 (Avondale - North Avondale), by quarter, 2009-2017
(Obstetric estimate of gestation <28 weeks)



Source: Hamilton County Public Health. Updated by J. Besl

Cincinnati Children's & Avondale

LONG TERM INVESTMENTS



FY17 Avondale Grants and Investments

| Organization | Outcome Area |
|--|-----------------------------|
| Avondale Community Council | Social Influences of Health |
| Avondale Comp Dev Corporation (ACDC) | Social Influences of Health |
| Avondale Moves | Keeping Kids Well |
| CWFF Child Development Center | Literacy |
| Center for Closing the Health Gap | Keeping Kids Well |
| Easter Seals | Social Influences of Health |
| Every Child Succeeds (ECS) | Infant Mortality |
| Gabriel's Place | Keeping Kids Well |
| Hirsch Rec Center | Infant Mortality |
| Home Ownership Center | Social Influences of Health |
| Project Nehemiah Back to School Carnival | Literacy |
| Rockdale Academy | Literacy |
| South Avondale Elementary | Literacy |
| The Community Builders | Keeping Kids Well |
| United Way Steps | Social Influences of Health |
| Urban League | Social Influences of Health |
| Wesley Education Center | Literacy |



Total: \$383,500

Long-term Partnerships and Investments

Our investments Include:

- Commitment of \$11.5M (\$1.5M for program support and \$10M in community development)

Our Partnerships Include:

Infant Mortality and Premature Birth

- Every Child Succeeds
- Cradle Cincinnati

Education and Third Grade Reading

- Rockdale School Literacy Programs
- South Avondale School Programs
- Early Childcare Center Partnerships

Diversity and Inclusion

- Collaboration with Workforce Programs, Messer
- Biomedical Research Internship for Minority Students
- Job Shadow Program

Housing Collaborations

- Avondale Home Improvement Program
- Hickory Townhomes

Long-term Commitment to Providing Care

- Primary Care Center and School based health centers serving over 1,700 children living in Avondale
- All Children Thrive (ACT) Network
- School Base Health Centers
- Legal Aid CHILD HELP Initiative
- Gabriel's Place Jr. Chef Program
- Hirsch Recreation Center Health Programs
- The Community Builders Health Initiatives



Long-term Partnerships and Investments



Community Development

- Cincinnati Children's Financial Commitment: \$10M over 5 years
- May include residential housing, real estate and other community development
- Will work with Uptown Consortium and other partners



Capacity Building

- Cincinnati Children's financial commitment: \$1.55M over 5 years
- Capacity building grants for nonprofits serving Avondale
- Organizations advancing child and community health goals



Workforce Development and Economic Inclusion

- Maintain high standard of supplier diversity
- Encourage and align workforce development efforts to help meet real ongoing job needs
- Work to partner with others to amplify effort

Long-term Partnerships and Investments

Commitment to Investment and Partnership on Community Development

- \$10M Investment – managed by Avondale Partnership and Investment Committees
- Housing, Business and Economic Development – Investments Proposed and Pending
- Organizational capacity building grants to multiple Avondale non-profits including the ACC

AHIP Collaboration – Uptown, ACDC, CCHMC Partnership

- Forgivable \$35k home loans for eligible residents
- \$250K investment in Phase I
- \$250K investment in Phase II with expanded geography actively accepting applications

Hickory Townhomes – CCHMC in partnership with Uptown and Other Developers

- Partnership with developers to address vacant and blighted properties
- Phase 1 completed - Phase 2 in process – 16 Total units - \$1M investment
- Other investments in renovations, partnerships and programs (\$1M+)

